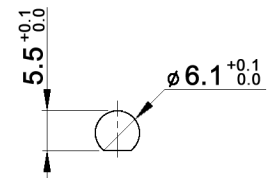


**PANEL MOUNTING**

**CONTACT ARRANGEMENT**

code for x	function	connected terminals
N	ON - ON	1-2, 4-5 alternating with 2-3, 5-6
R	ON - MOM	rest position: 1-2, 4-5; pushed down: 2-3, 5-6



**RATING**

y	contacts	all other conductive parts	rating DC	rating AC
empty	Ag (solid)	Brass, 10 µm Ag over 1.5 µm Ni	6V / 6 A 12V / 5 A 30 V / 4 A	125 V / 6 A 250 V / 3 A
B	Brass, 2 µm Au over 3 µm Ni	Brass, 2 µm Au over 3 µm Ni	max. 0.4 VA, max. 20 V AC/DC	
G	Ag (solid), 2 µm Au over 3 µm Ni	Brass, 2 µm Au over 3 µm Ni	6V / 6 A 12V / 5 A 30 V / 4 A 150 V / 10 mA	125 V / 6 A 250 V / 3 A

**Specifications:**

- Contact resistance: 20mOhm max.
- Insulation resistance: 1 000MOhm min. at 500V DC
- Dielectric strength: 1 500V, 50Hz for the duration of 1 minute
- Operating temperature: -45°C to +140°C
- Mechanical life: min. 30 000 cycles
- Soldering conditions: hand-soldering: max.: 420°C, 3sec., 60W  
auto-soldering: max.: 270°C, 5sec.
- Mounting instruction: max. torque: 49Ncm
- IP rating: IP67
- Material: Case: DAP  
Housing: steel, nickel plated  
Bushing: copper alloy, C3604BD nickel plated  
Actuator: copper alloy, C3604BD chrome plated
- Included accessories: 1 pc. nut M6x0.75, nickel plated, 9mm wrench size  
1 pc. tooth washer  
1 pc. O-ring, silicone

**Compliance: RohS III (2015/863/EU)**

Tolerances: 0.00: ±0.25mm 0.0: ±0.40mm	Date	Name	<h1>MPE 206 xy</h1>
	06/09	dr	
Revised	01/22	dr	<h1>30 18 48</h1>
Contact arrangement	07/15	dr	
Revised	07/12	dr	
Dimension	01/11	dr	
Modifications	Date	Name	<b>knitter-switch</b>
			Page 1/1